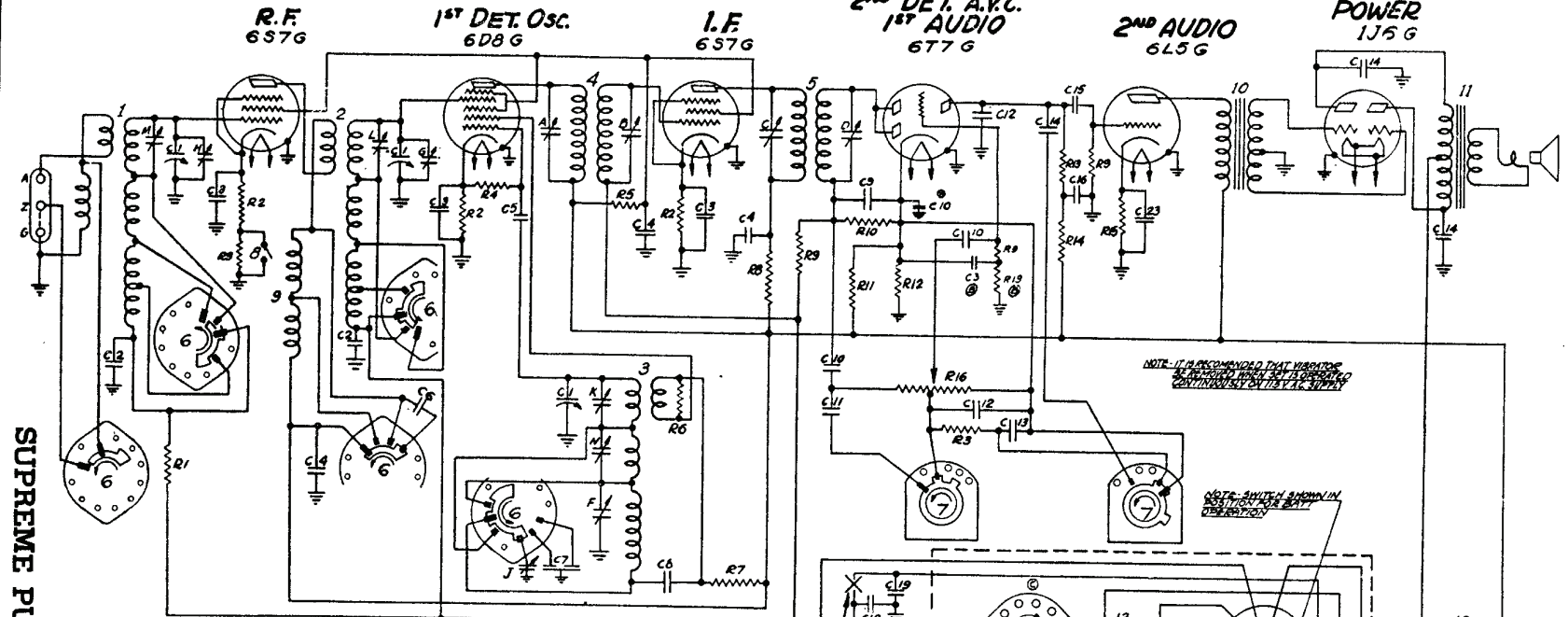
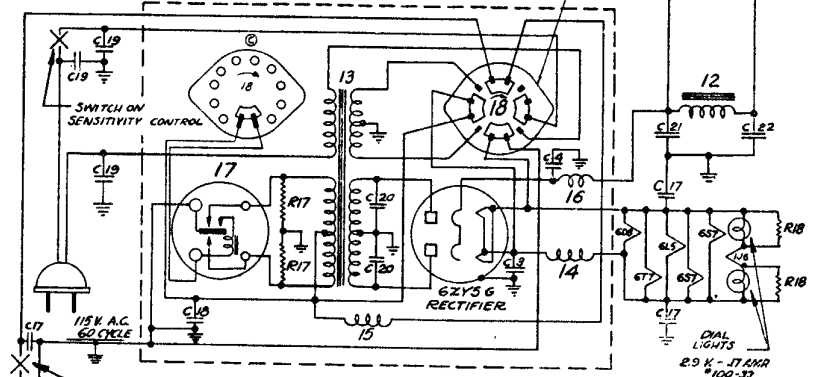


Models 7-J-232, 7-J-259 (5711 Chassis)



NOTE: IT IS RECOMMENDED THAT WARNINGS IN THIS MANUAL BE OBSERVED CONTINUOUSLY DURING REPAIRS.

NOTE: SWITCH SHOWN IN POSITION FOR BEST OPERATION.



I.F. FREQUENCY 456 K.C.
 7 TUBE SUPERHETERODYNE
 CHASSIS NO. 5711
 6 VOLT D.C. — 115 VOLT A.C.
 ZENITH RADIO CORPORATION

SUPREME PUBLICATIONS

229

DIAG. NO.	PART NO.	DESCRIPTION	DIAG. NO.	PART NO.	DESCRIPTION
C1	22 348	THREE GANG VARIABLE	R6	63-648	47 M OHM 1/4W 1/20
C2	22 487	.05 MFD.	R9	43-678	47 M OHM 1/2W 1/10
C3	22 250	.05 MFD.	R8	63-599	10 M OHM 1/4W 1/20
C4	22 218	.05 MFD.	R7	63-796	10 M OHM 1/2W 1/10
C5	22 289	50 MMFD.	R2	63-605	1000 OHM 1/4W 1/20
C6	22 127	25 MMFD.	R9	63-271	1 MEG OHM 1/4W 1/20
C7	22 350	DUAL FIXED PADDER	R10	63-650	390 M OHM 1/4W 1/10
C8	22 358	.002 MFD.	R11	63-160	100 M OHM 1/2W 1/10
C9	22 162	.0001 MFD.	R12	63-636	320 OHM 1/4W 1/10
C10	22 321	.02 MFD.	R13	63-597	470 M OHM 1/4W 1/20
C11	22 182	.00025 MFD.	R4	63-656	270 M OHM 1/4W 1/10
C12	22 147	.0005 MFD.	R15	63-797	2200 OHM 1/2W 1/10
C13	22 229	.005 MFD.	R16	43-568	2 MEG OHM VOLUME CONTROL
C14	22 492	.002 MFD.	R17	63-577	100 OHM 1/2W 1/20
C15	22 188	.02 MFD.	R18	63-801	21 OHM (WIREWOUND) 1/2W 1/5
C16	22 170	.1 MFD.	R19	63-596	330 M OHM 1/4W 1/20
C17	22 350	.25 MFD.	1	S-5017	ANT. COIL & SHIELD ASSEM.
C18	22 199	.5 MFD.	2	S-5018	DET. COIL & SHIELD ASSEM.
C19	22 435	.05 MFD.	3	S-5163	OSC. COIL & SHIELD ASSEM.
C20	22 574	.05 MFD.	4	95-416	1ST. I.F. TRANSFORMER
C21	22 577	8 MFD. ELECTROLYTIC	5	95-417	END I.F. TRANSFORMER
C22	22 577	10 MFD. " "	6	85-103	BAND SELECTOR SWITCH
C23	22 577	10 MFD. " "	7	85-108	TONE CONTROL SWITCH
R1	63 585	100 M OHM 1/4W 1/20	8	85-117	SENSITIVITY SWITCH
R2	43 632	560 OHM 1/4W 1/10	9	20-135	R.F. CHASSIS
R3	48 593	47 M OHM 1/4W 1/20	10	95-446	AUDIO TRANSFORMER